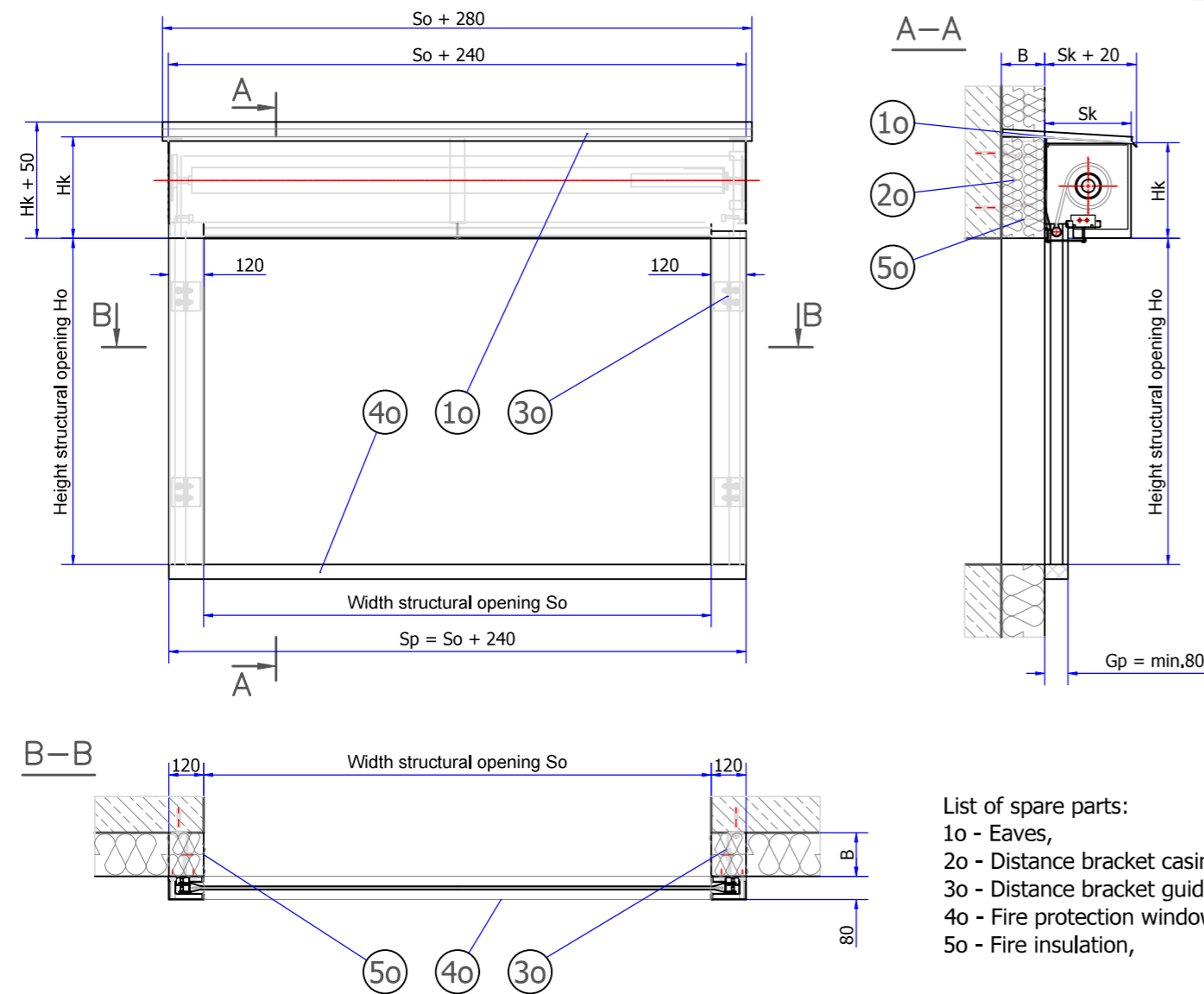
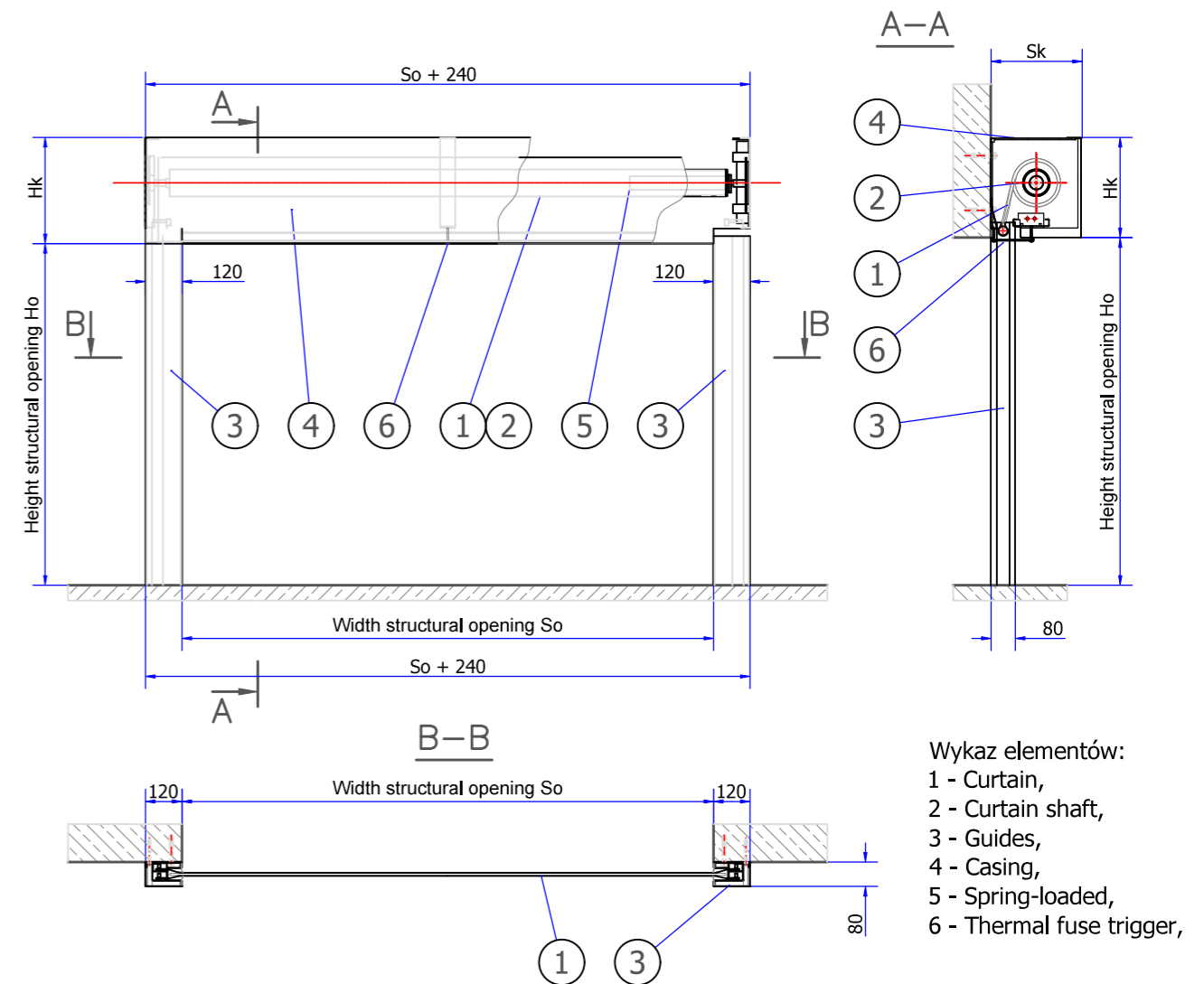


INDIRECT WALL MOUNTING



- List of spare parts:
 1o - Eaves,
 2o - Distance bracket casing,
 3o - Distance bracket guides,
 4o - Fire protection window sill,
 5o - Fire insulation,

DIRECT WALL MOUNTING

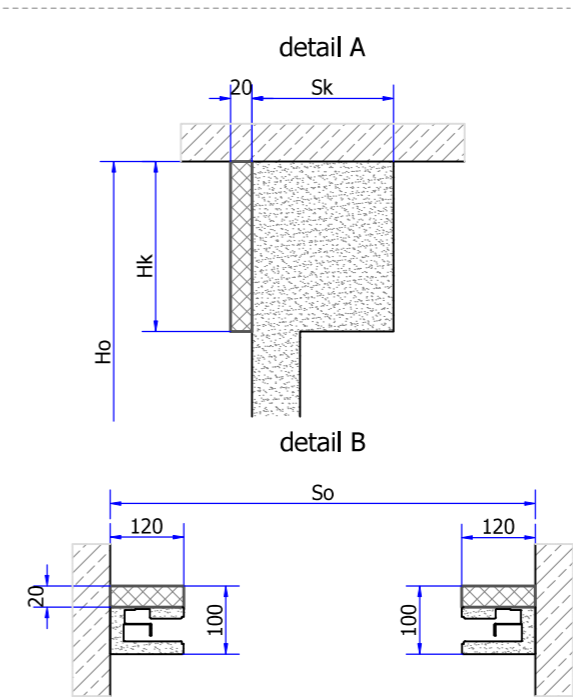


- Wykaz elementów:
 1 - Curtain,
 2 - Curtain shaft,
 3 - Guides,
 4 - Casing,
 5 - Spring-loaded,
 6 - Thermal fuse trigger,

Comments:

- minimum structural opening dimensions:
 - width $So = 850$ mm - for a wall-mounted installation, 1090 mm - for a corridor-closure version,
 - height $Ho = 600$ mm,
- when installing a winding shaft directly to a slab, a size "Sk" increases by 20 mm, see detail A,
- when installing guide rails in a recessed mounting (corridor-closure version), thickness of a guide rail increases by 20 mm - see detail B,
- Eaves (item 1o) is indispensable for curtains installed outside of a building,
- when a curtain protects a structural opening over the floor, an additional element needs to be installed (e.g. a window sill - item 4o), which is made of a flame retardant in A1 class (as per PN-EN 13501-1) or in EI60 class (as per PN-EN 13501-2) as well as minimum dimensions $Sp \times Gp$ [mm]; a height of a window sill depends on a kind of materials used to manufacture it,
- space between a wall, guide rails and the wall, a shaft box (item 5o) has to be filled with a flame retardant e.g. rock wool in A1 class (as per PN-EN 13501-1) and density minimum 170 kg/m^3 ,
- the maximum size of the gap: $B = 330$ mm,

Małkowski-Martech S.A. reserves the right to introduce changes in the Installation Requirements.



HEIGHT STRUCTURAL OPENING HO [mm]	2 500						
	2 250						
	2 000						
	1 750						
	1 500						
	1 250						
	1 000						
600							
	850	1 250	1 500	1 750	2 000	2 250	2 500
	WIDTH STRUCTURAL OPENING SO [mm]						
	Minimum dimensions required on head Sk x Hk [mm]:						
	□ - 250 x 275			■ - 300 x 325			