

KWZ-Ok2, Edition 2-2022

WALL OPENING HEIGHT Ho [mm]	601 - 1 000	1 001 - 1 500	1 501 - 2 000	2 001 - 2 500	2 501 - 3 000	3 001 - 3 500	3 501 - 4 000	4 001 - 4 500	4 501 - 5 000	5 001 - 5 500	5 501 - 6 000	6 001 - 6 500	6 501 - 7 000	7 001 - 7 500	7 501 - 8 000	8 001 - 8 500	8 501 - 9 000	9 001 - 9 500	9 501 - 10 000	10 001 - 10 500	10 501 - 11 000	11 001 - 11 500	11 501 - 12 000
9751 - 10 000	3	3	4	6	6	7	7	7	7	7	7	7	7	7	7	8	8	8	8	8	8	8	8
9 501 - 9 750	3	3	4	6	6	7	7	7	7	7	7	7	7	7	7	8	8	8	8	8	8	8	8
9 251 - 9 500	3	3	3	6	6	6	7	7	7	7	7	7	7	7	7	8	8	8	8	8	8	8	8
9 001 - 9 250	2	3	3	4	6	6	7	7	7	7	7	7	7	7	7	8	8	8	8	8	8	8	8
8 751 - 9 000	2	3	3	4	6	6	7	7	7	7	7	7	7	7	7	8	8	8	8	8	8	8	8
8 851 - 8 750	2	3	3	4	6	6	7	7	7	7	7	7	7	7	7	8	8	8	8	8	8	8	8
8 251 - 8 500	2	3	3	4	6	6	6	7	7	7	7	7	7	7	7	8	8	8	8	8	8	8	8
8 001 - 8 250	2	3	3	4	6	6	6	7	7	7	7	7	7	7	7	8	8	8	8	8	8	8	8
7 751 - 8 000	2	3	3	3	6	6	6	7	7	7	7	7	7	7	7	8	8	8	8	8	8	8	8
7 501 - 7 750	2	3	3	3	4	6	6	6	7	7	7	7	7	7	7	8	8	8	8	8	8	8	8
7 251 - 7 500	2	3	3	3	4	6	6	6	7	7	7	7	7	7	7	8	8	8	8	8	8	8	8
7 001 - 7 250	2	3	3	3	4	6	6	6	7	7	7	7	7	7	7	8	8	8	8	8	8	8	8
6 751 - 7 000	2	3	3	3	3	4	6	6	7	7	7	7	7	7	7	8	8	8	8	8	8	8	8
6 501 - 6 750	2	2	3	3	3	4	6	6	6	7	7	7	7	7	7	8	8	8	8	8	8	8	8
6 251 - 6 500	2	2	3	3	3	4	6	6	6	7	7	7	7	7	7	8	8	8	8	8	8	8	8
6 001 - 6 250	2	2	3	3	3	4	4	6	6	6	7	7	7	7	7	8	8	8	8	8	8	8	8
5 751 - 6 000	2	2	3	3	3	3	4	6	6	6	6	7	7	7	7	8	8	8	8	8	8	8	8
5 501 - 5 750	2	2	3	3	3	3	4	4	6	6	6	6	7	7	7	8	8	8	8	8	8	8	8
5 251 - 5 500	1	2	2	3	3	3	4	4	6	6	6	7	7	7	7	8	8	8	8	8	8	8	8
5 001 - 5 250	1	2	2	3	3	3	3	4	4	6	6	7	7	7	7	8	8	8	8	8	8	8	8
4 751 - 5 000	1	2	2	3	3	3	3	4	4	6	6	7	7	7	7	8	8	8	8	8	8	8	8
4 501 - 4 750	1	2	2	3	3	3	3	4	4	6	6	7	7	7	7	8	8	8	8	8	8	8	8
4 251 - 4 500	1	2	2	2	3	3	3	3	4	6	7	7	7	7	7	8	8	8	8	8	8	8	8
4 001 - 4 250	1	2	2	2	3	3	3	3	4	6	6	7	7	7	7	8	8	8	8	8	8	8	8
3 751 - 4 000	1	1	2	2	2	3	3	3	3	4	4	6	6	7	7	8	8	8	8	8	8	8	8
3 501 - 3 750	1	1	2	2	2	3	3	3	3	4	4	6	6	7	7	8	8	8	8	8	8	8	8
3 251 - 3 500	0	1	2	2	2	2	3	3	3	3	4	6	6	7	7	8	8	8	8	8	8	8	8
3 001 - 3 250	0	1	2	2	2	2	3	3	3	3	3	6	6	6	7	7	8	8	8	8	8	8	8
2 751 - 3 000	0	1	1	2	2	2	3	3	3	3	3	6	6	6	6	7	7	8	8	8	8	8	8
2 501 - 2 750	0	1	1	2	2	2	2	3	3	3	3	6	6	6	6	6	7	7	8	8	8	8	8
2 251 - 2 500	0	0	1	1	2	2	2	2	3	3	3	3	6	6	6	6	6	7	7	8	8	8	8
2 001 - 2 250	0	0	1	1	2	2	2	2	2	3	3	4	6	6	6	6	6	7	7	8	8	8	8
1 751 - 2 000	0	0	1	1	1	2	2	2	2	2	3	3	4	4	6	6	6	6	7	7	8	8	8
1 501 - 1 750	0	0	0	1	1	1	2	2	2	2	3	3	3	4	4	6	6	6	6	7	7	8	8
1 251 - 1 500	0	0	0	0	1	1	1	2	2	2	2	3	3	3	4	4	4	6	6	6	6	7	7
1 001 - 1 250	0	0	0	0	0	1	1	2	2	2	2	2	3	3	3	3	4	6	6	6	6	6	6
500 - 1 000	0	0	0	0	0	0	1	1	2	2	2	2	2	3	3	3	3	6	6	6	6	6	6

WALL OPENING WIDTH So [mm]

DIAGRAM LEGEND

HOUSING DIMENSIONS
Sk x Hk [mm]

- 775 x 800
- 725 x 750
- 675 x 700
- 625 x 650
- 575 x 600
- 525 x 550
- 475 x 500
- 425 x 450
- 375 x 400
- 325 x 350

DRIVE TYPE

- 0 VIC-0403 [24/3]
- 1 VIC-0423 [230P/2]
- 2 VIC-0426 [230P/2]
- 3 VIC-0428 [230P/4]
- 4 VIC-0429 [230P/4]
- 5 VIC-0430 [230P/5]
- 6 VIC-0431 [230P/6]
- 7 VIC-0741 [Z400/4]
- 8 VIC-0742 [Z400/5]

MARKING OF DRIVES

- power supply before the main switch (guaranteed) necessary to close the gate
- Z - external drive
- P - fire resistant cables must be connected to the connection
- Gr - gravity operated drive
- 230 - the value of the voltage applied to the control panel [V]
- /4 - minimum connection value [A]

NOTES:

- fire protection rolling door type MARC-Ok in the basic version is manufactured with the declared use category **C1** (number of cycles 500 - 9 999 (according to EN 16034:2014-11) and resistance to wind load class **1** (according to PN-EN 12424:2002),
- at the customer's request, the MARC-Ok rolling door can be manufactured with the declared use category **C2** (number of cycles 10 000 - 49 999) and resistance to wind load class **2**;

**MAŁKOWSKI
MARTECH**

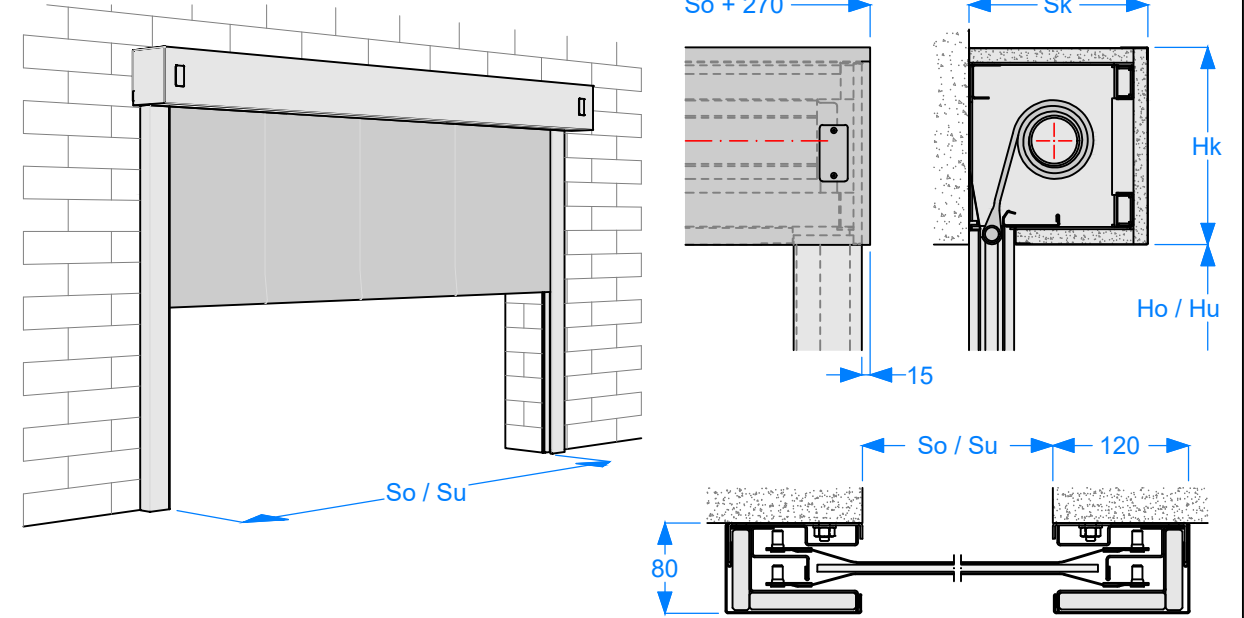
**FIRE PROTECTION ROLLING DOOR
MARC-Ok EI₂120 plus
powered operation**

Number
KWZ-Ok2

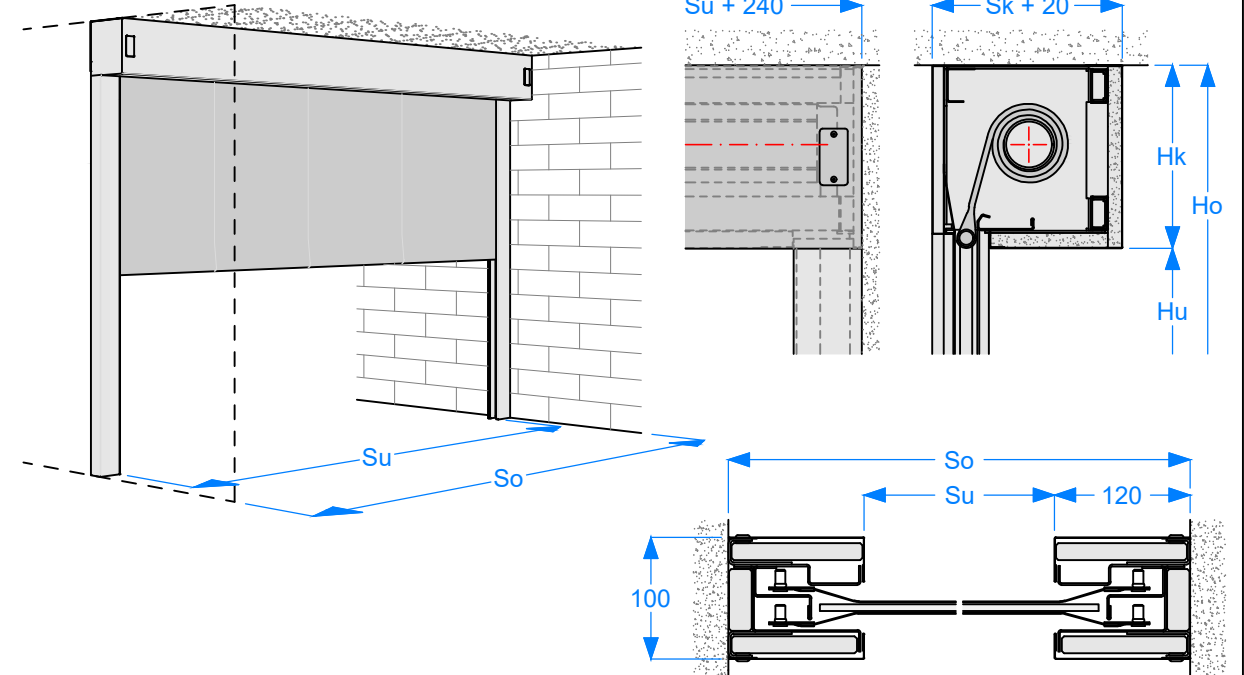
Edition
2-2022

ASSA ABLOY **INSTALLATION CONDITIONS SHEET**

Wall mounting (with the internal drive)



Cross corridor mounting (with the internal drive)



All dimensions are in millimeters [mm]

Notations used in the drawings:

- So - structural / wall opening width
- Su - clear opening width
- Ho - structural / wall opening height
- Hu - clear opening height
- Sk - housing width
- Hk - housing height

NOTICE

In the case of the cross corridor mounting, there should be an installation clearance of 10 mm per side.